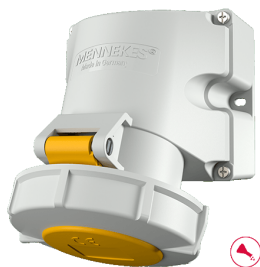


带 TwinCONTACT 双接线端子的面板式插座
货号 9150

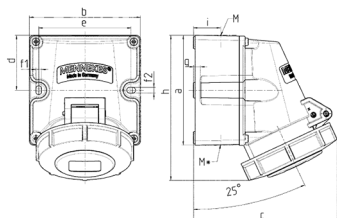


- # 免螺钉弹簧端子
- # 抗化学腐蚀
- # 适用于T接线
- # 带 2 个外部固定孔
- # 外壳底座可旋转 180°
- # 插座可安装辅助触点

技术信息

| | |
|------|-------------------|
| 伏特 | 32 A |
| 极数 | 3 p |
| 电压 | 110 V |
| 钟点位置 | 4 h |
| 赫兹 | 50–60 Hz |
| 连接方式 | 免螺钉 - TwinCONTACT |
| 触点 | 标准 |
| 防护等级 | IP 67 |
| 重量 | 482 克 |
| 认证标志 | EAC |

图纸



| Drawing 1 MB 622 | Amp. Poles | 16 | | | 32 | | |
|---------------------|--|----------------------------|------|------|----------------------------|------|------|
| | | 3 | 4 | 5 | 3 | 4 | 5 |
| Dim. in mm | a | 100 | 100 | 100 | 100 | 100 | 100 |
| | b | 101 | 101 | 101 | 109 | 109 | 109 |
| | c | 117 | 125 | 131 | 157 | 157 | 160 |
| | d | 50 | 50 | 50 | 50 | 50 | 50 |
| | e | 84 | 84 | 84 | 92 | 92 | 92 |
| | f1 | 5.3 | 5.3 | 5.3 | 5.3 | 5.3 | 5.3 |
| | f2 | 5.3 | 5.3 | 5.3 | 5.3 | 5.3 | 5.3 |
| | g | 6.5 | 6.5 | 6.5 | 6.5 | 6.5 | 6.5 |
| | h | 131 | 131 | 132 | 148 | 148 | 148 |
| | i | 24.7 | 24.7 | 24.7 | 27.5 | 27.5 | 27.5 |
| | M | 25 (optional M20) | | | 32 (optional M25) | | |
| | M* | 2x25 (blind) to be cut out | | | 2x25 (blind) to be cut out | | |
| | Max. cable diam. (mm) | 18 (M25) and 15 (M20) | | | 25 (M32) and 18 (M25) | | |
| | Terminal for cond. cross section (mm²) min.-max. | 1.5 | 1.5 | 1.5 | 2.5 | 2.5 | 2.5 |
| | | -4 | -4 | -4 | -6 | -6 | -6 |